

#### R3002 Digital Manometer Software Features

Compatible with Microsoft Windows© XP, Vista / 7 / 8 / 10

Connectivity: USB

#### Software Features

- Device data management: Erase/load instrument data, Remotely control instrument (Figure 1)
- Set your sample rate (Figure 2)
- Track data in real-time and calculate statistics on the fly (Figure 3)
- Export data to Microsoft Excel (See sample data, Figure 4)

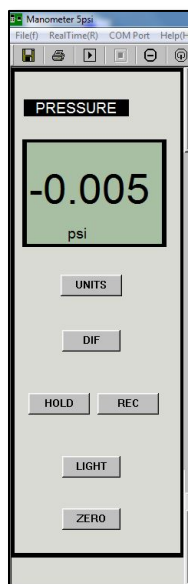


Figure 1

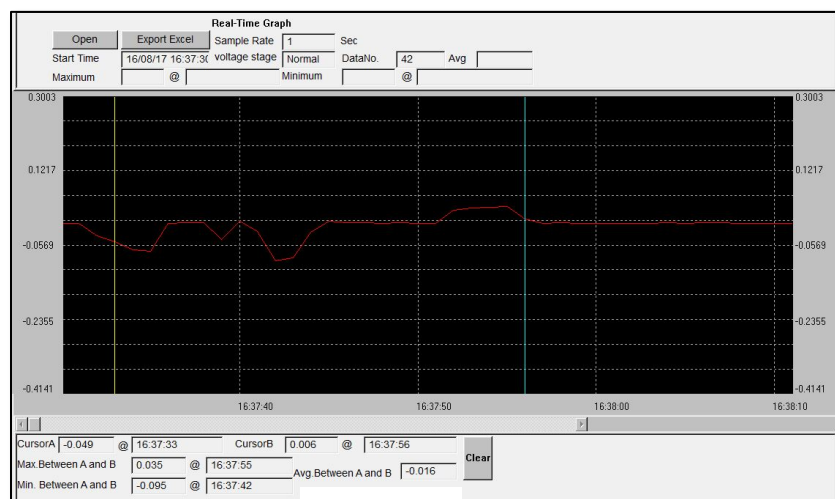


Figure 3

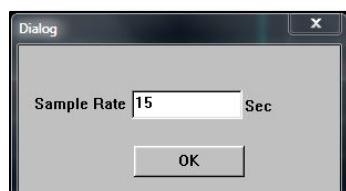


Figure 2

	A	B	C	D
1	NO	DATA	UNIT	TIME
2	1	-0.006	psi	16:37:30
3	2	-0.006	psi	16:37:31
4	3	-0.036	psi	16:37:32
5	4	-0.05	psi	16:37:33
6	5	-0.07	psi	16:37:34
7	6	-0.073	psi	16:37:35
8	7	-0.006	psi	16:37:36
9	8	-0.005	psi	16:37:37
10	9	-0.005	psi	16:37:38
11	10	-0.045	psi	16:37:39
12	11	0	psi	16:37:40
13	12	-0.026	psi	16:37:41
14	13	-0.096	psi	16:37:42
15	14	-0.089	psi	16:37:43
16	15	-0.028	psi	16:37:44
17	16	0	psi	16:37:45
18	17	-0.005	psi	16:37:46
19	18	-0.005	psi	16:37:47
20	19	-0.006	psi	16:37:48
21	20	-0.005	psi	16:37:49
22	21	-0.006	psi	16:37:50
23	22	-0.006	psi	16:37:51
24	23	0.026	psi	16:37:52
25	24	0.032	psi	16:37:53
26	25	0.034	psi	16:37:54

Figure 4