

Manometer

MODEL PM-9100

- 8 selectable measuring units: psi, mBar, kg/cm², mm/Hg, in/Hg, meter/wc, in/wc and atmosphere
- Wide measurement range of 29 psi (2000 mBar) maximum
- Dual differential inputs with internal sensors
- Large LCD readout with contrast adjustment
- Zero function for offset measurements
- Data Hold and Min/Max recall
- Auto power off
- RS232 output
- Sampling Time: 0.8 second
- Hard carrying case included



Function	Range	Resolution	Accuracy
mbar	±2000	1	±2% f.s.
psi	±29	0.02	±1% f.s.
kg/cm ²	±2.040	0.001	±1% f.s.
mmHg	±1500	1	±1% f.s.
inHg	±59.05	0.05	±1% f.s.
mH ₂ O	±20.40	0.01	±1% f.s.
inH ₂ O	±802.0	0.5	±1% f.s.
Atmosphere	±1.974	0.001	±1% f.s.
Dimensions:	7.1 x 2.8 x 1.3"/180 x 72 x 32mm		
Weight:	12.2 oz/345g		

PM-9100	Manometer
SW-U801-WIN	Software
UPCB-01	RS232 Cable
USB-01	USB Cable
VW3USB11A	RS232 to USB Converter Cable

Manometer

MODELS 8230 & 82100

- Digital display of gauge or differential pressure
- Select from one of 11 different pressure units: psi, kph, mbar, bar, cmH₂O, mmHg, oz-in², kg/cm², in H₂O, ft H₂O
- Data hold
- Max/Min Record
- Display backlight
- Auto power off
- Low battery indicator
- Simple fittings for hose connection
- Optional RS232 interface
- Includes hard carrying case, 9V battery, connection hose and manual



Pressure Ranges: **8230:** 0 to 30 psi;
82100: 0 to 100 psi
 Maximum Pressure: **8230:** 60 psi;
82100: 150 psi
 Accuracy: ±0.3% of full scale at 25°C
 Linearity and Hysteresis: ±0.29% FSO
 Repeatability: ±0.2% FSO
 Response Time: 0.3 msec
 Temperature Compensation: 0 to 50°C
 Power Supply: 9V alkaline battery, included
 Dimensions: 2.8 x 7.2 x 1.2" (72 x 182 x 30 mm)
 Weight: 5.5 oz (150g)

8230	Manometer, 0 to 30 psi
82100	Manometer, 0 to 100 psi
VZRS232BN	RS232 Interface
VW3USB11A	RS232 to USB Converter Cable

Manometer

MODEL ST-8890

- Measure gauge and differential pressure for 0 to 5 psi
- 11 selectable units of measure: psi, in H₂O, bar, mbar, kPa, inHg, mmHg, oz in², ft H₂O, cmH₂O, and kg cm²
- Dual LCD readouts with backlighting
- Min/Max/Avg recording with time stamp
- Data hold freezes the displayed reading
- Push button zero adjust and offset readings
- Low battery indication with auto power off
- USB output
- Includes USB cable, tubing, hard carrying case and battery



Pressure Ranges: 5.000 psi; 138.3 inH₂O; 0.344 bar; 344.7 mbar, 34.47 kPa;
 1.018 inHg; 258.5 mmHg, 80.00 ozin²; 11.53 ftH₂O; 351.5 cmH₂O; 0.351 kgcm²
 Resolution: 0.001 psi; 0.1 in H₂O; 0.001 bar; 0.1 mbar, 0.01 kPa; 0.01 inHg;
 0.1 mmHg, 0.01 oz in²; 0.01 ft H₂O; 0.1 cmH₂O; 0.001 kg cm²
 Accuracy: ±0.3% f.s.
 Repeatability: ±0.2% f.s.
 Hysteresis: ±0.29% f.s.
 Maximum Pressure: 20 psi
 Response Time: 0.5 second
 Power Supply: Single 9V battery

ST-8890	Manometer
BS-6	Tripod

Manometer

MODEL PS-9302

- Accepts 7 interchangeable transducers with ranges of 30, 75, 150, 300, 725, 1450 and 5800 psi (Transducer sold separately)
- 8 selectable measuring units: psi, bar, kg/cm², in/Hg, mm/Hg, meter/wc, in/wc and atmosphere
- Push-button transducer selection
- Zero function for offset correction
- Data Hold and Min/Max recall
- Auto power off
- RS232 serial interface
- Options: SW-U801-WIN software, UPGB-01 RS-232 cable and USB-01 USB cable



Range	30psi	75psi	150psi	300psi	725psi	1450psi
mbar	0.002-2	0.005-5	0.1-10	0.2-20	0.05-50	0.1-100
psi	0.02-29	0.1-72.5	0.2-145	0.2-290	1-725	2-1450
kg/cm ²	0.002-2.040	0.005-5.095	0.01-10.19	0.02-20.40	0.05-50.95	0.1-101.9
mmHg	2-1500	5-3750	10-7500	20-15,000	50-37,500	100-75,000
inHg	0.05-59.05	0.1-147.6	0.2-295.2	0.5-590.5	1-1476	2-2952
mH ₂ O	0.02-20.40	0.05-50.95	0.1-101.9	0.2-204.0	0.5-509.5	1-1019
inH ₂ O	1-802	2-2006	5-4010	10-8020	20-20,050	50-40,100
Atmosphere	0.002-1.974	0.005-4.935	0.01-9.87	0.02-19.74	0.05-49.35	0.1-98.7

PS-9302

- PS100-30PSI
- PS100-75PSI
- PS100-150PSI
- PS100-300PSI
- PS100-725PSI
- PS100-1450PSI
- PS100-5800PSI

Manometer

- Pressure Transducer, 30 psi
- Pressure Transducer, 75 psi
- Pressure Transducer, 150 psi
- Pressure Transducer, 300 psi
- Pressure Transducer, 725 psi
- Pressure Transducer, 1450 psi
- Pressure Transducer, 5800 psi

Pressure Gauge

SERIES LF

- Stamped aluminum 4-1/2" (115mm) diameter dial
- Black, impact resistant phenolic case
- 316 stainless steel bourdon tube and socket
- Silicone fluid filled and rated for -50 to 170°F
- 1/2% of full scale accuracy
- Transient over-pressure limit: 30%
- Restrictor screw
- Shatterproof glass lens
- Integral back flange
- Safety blowout backplate
- Micrometer adjustable pointer
- 1/4" or 1/2" NPT male connection bottom



1/4" NPT BOTTOM CONNECTION

LF45-15-1/4	Pressure Gauge, 30"-0-15psi
LF45-30-1/4	Pressure Gauge, 30"-0-30psi
LF45-60-1/4	Pressure Gauge, 30"-0-60psi
LF45-30HG-1/4	Pressure Gauge, 30"-0" Hg Vac.
LF45-15P-1/4	Pressure Gauge, 0 to 15psi/0 to 100kPa
LF45-30P-1/4	Pressure Gauge, 0 to 30psi/0 to 200kPa
LF45-60P-1/4	Pressure Gauge, 0 to 60psi/0 to 400kPa
LF45-100P-1/4	Pressure Gauge, 0 to 100psi/0 to 700kPa
LF45-160P-1/4	Pressure Gauge, 0 to 160psi/0 to 1100kPa
LF45-200P-1/4	Pressure Gauge, 0 to 200psi/0 to 1400kPa
LF45-300P-1/4	Pressure Gauge, 0 to 300psi/0 to 2100kPa
LF45-400P-1/4	Pressure Gauge, 0 to 400psi/0 to 2800kPa
LF45-600P-1/4	Pressure Gauge, 0 to 600psi/0 to 4200kPa
LF45-1000P-1/4	Pressure Gauge, 0 to 1000psi/0 to 7000kPa
LF45-1500P-1/4	Pressure Gauge, 0 to 1500psi/0 to 10500kPa
LF45-2000P-1/4	Pressure Gauge, 0 to 2000psi/0 to 14000kPa
LF45-3000P-1/4	Pressure Gauge, 0 to 3000psi/0 to 21000kPa
LF45-5000P-1/4	Pressure Gauge, 0 to 5000psi/0 to 35000kPa
LF45-10000P-1/4	Pressure Gauge, 0 to 10000psi/0 to 70000kPa

1/2" NPT BOTTOM CONNECTION

LF45-15-1/2	Pressure Gauge, 30"-0-15psi
LF45-30-1/2	Pressure Gauge, 30"-0-30psi
LF45-60-1/2	Pressure Gauge, 30"-0-60psi
LF45-30HG-1/2	Pressure Gauge, 30"-0" Hg Vac.
LF45-15P-1/2	Pressure Gauge, 0 to 15psi/0 to 100kPa
LF45-30P-1/2	Pressure Gauge, 0 to 30psi/0 to 200kPa
LF45-60P-1/2	Pressure Gauge, 0 to 60psi/0 to 400kPa
LF45-100P-1/2	Pressure Gauge, 0 to 100psi/0 to 700kPa
LF45-160P-1/2	Pressure Gauge, 0 to 160psi/0 to 1100kPa
LF45-200P-1/2	Pressure Gauge, 0 to 200psi/0 to 1400kPa
LF45-300P-1/2	Pressure Gauge, 0 to 300psi/0 to 2100kPa
LF45-400P-1/2	Pressure Gauge, 0 to 400psi/0 to 2800kPa
LF45-600P-1/2	Pressure Gauge, 0 to 600psi/0 to 4200kPa
LF45-1000P-1/2	Pressure Gauge, 0 to 1000psi/0 to 7000kPa
LF45-1500P-1/2	Pressure Gauge, 0 to 1500psi/0 to 10500kPa
LF45-2000P-1/2	Pressure Gauge, 0 to 2000psi/0 to 14000kPa
LF45-3000P-1/2	Pressure Gauge, 0 to 3000psi/0 to 21000kPa
LF45-5000P-1/2	Pressure Gauge, 0 to 5000psi/0 to 35000kPa
LF45-10000P-1/2	Pressure Gauge, 0 to 10000psi/0 to 70000kPa

Pressure Gauge

SERIES LVBNA

- 2.5" diameter dial has dual English/metric scales
- ASME Grade B accuracy: $\pm 3\%$ first 3rd of scale, $\pm 2\%$ middle 3rd of scale, and $\pm 3\%$ last 3rd
- Corrosion resistant stainless steel case and ring, acrylic lens
- Brass internal materials
- 1/4" NPT bottom connection only
- Rated for -20 to 60°C and pressure steady at 75% f.s.

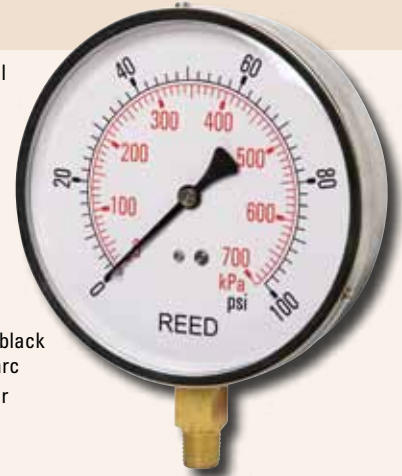


LVBNA-30HG	Pressure Gauge, 0-30"Hg Vac
LVBNA-30	Pressure Gauge, 30"Hg Vac to 30psi
LVBNA-15P	Pressure Gauge, 0 to 15psi/0 to 105kPa
LVBNA-30P	Pressure Gauge, 0 to 30psi/0 to 210kPa
LVBNA-60P	Pressure Gauge, 0 to 60psi/0 to 420kPa
LVBNA-100P	Pressure Gauge, 0 to 100psi/0 to 700kPa
LVBNA-160P	Pressure Gauge, 0 to 160psi/0 to 1120kPa
LVBNA-200P	Pressure Gauge, 0 to 200psi/0 to 1400kPa
LVBNA-300P	Pressure Gauge, 0 to 300psi/0 to 2100kPa
LVBNA-400P	Pressure Gauge, 0 to 400psi/0 to 2800kPa
LVBNA-600P	Pressure Gauge, 0 to 600psi/0 to 4200kPa
LVBNA-1000P	Pressure Gauge, 0 to 1000psi/0 to 7000kPa

Pressure Gauge

SERIES 421AVND

- Corrosion resistant stainless steel case and ring, plastic lens
- Phosphor bronze movement is recommended for average general use
- Soft soldered phosphor bronze tube with brass socket. Suitable for steam, water, air, oil, gas or any medium not corrosive to copper alloys
- White background dial with bold black numerals and graduations, 270° arc
- Balanced adjustable black pointer
- 1% accuracy
- 1/4" NPT bottom connection only



421AVND-30VAC	Pressure Gauge, 0-30"Hg Vac
421AVND-30	Pressure Gauge, 0 to 30 psi
421AVND-60	Pressure Gauge, 0 to 60 psi
421AVND-100	Pressure Gauge, 0 to 100 psi
421AVND-160	Pressure Gauge, 0 to 160 psi
421AVND-200	Pressure Gauge, 0 to 200 psi
421AVND-300	Pressure Gauge, 0 to 300 psi
421AVND-500	Pressure Gauge, 0 to 500 psi

Pressure Gauge

SERIES AVNC & AHNC

- Stamped aluminum 2.5" diameter dial
- Polished stainless steel case
- Glass lens, pressed bezel
- Bronze tube and brass socket with brass movement
- 1/4" male NPT connection, bottom or back
- 1.6% accuracy
- Glycerine fill provides a dampening effect which minimizes pulsations; continuously lubricates gauge movement; and makes this gauge ideally suited for adverse environments



SERIES AVNC - BOTTOM CONNECTION

AVNC-30HG	Pressure Gauge, 0-30"Hg Vac
AVNC-30	Pressure Gauge, 30"Hg Vac to 30psi
AVNC-15P	Pressure Gauge, 0 to 15psi/0 to 100kPa
AVNC-30P	Pressure Gauge, 0 to 30psi/0 to 200kPa
AVNC-60P	Pressure Gauge, 0 to 60psi/0 to 400kPa
AVNC-100P	Pressure Gauge, 0 to 100psi/0 to 700kPa
AVNC-160P	Pressure Gauge, 0 to 160psi/0 to 1100kPa
AVNC-200P	Pressure Gauge, 0 to 200psi/0 to 1400kPa
AVNC-300P	Pressure Gauge, 0 to 300psi/0 to 2100kPa
AVNC-400P	Pressure Gauge, 0 to 400psi/0 to 2800kPa
AVNC-600P	Pressure Gauge, 0 to 600psi/0 to 4200kPa
AVNC-1000P	Pressure Gauge, 0 to 1000psi/0 to 7000kPa
AVNC-1500P	Pressure Gauge, 0 to 1500psi/0 to 10500kPa
AVNC-2000P	Pressure Gauge, 0 to 2000psi/0 to 14000kPa
AVNC-3000P	Pressure Gauge, 0 to 3000psi/0 to 21000kPa
AVNC-5000P	Pressure Gauge, 0 to 5000psi/0 to 35000kPa
AVNC-6000P	Pressure Gauge, 0 to 6000psi/0 to 42000kPa

SERIES AHNC - BACK CONNECTION

AHNC-30HG	Pressure Gauge, 0-30"Hg Vac
AHNC-30	Pressure Gauge, 30"Hg Vac to 30psi
AHNC-15P	Pressure Gauge, 0 to 15psi/0 to 100kPa
AHNC-30P	Pressure Gauge, 0 to 30psi/0 to 200kPa
AHNC-60P	Pressure Gauge, 0 to 60psi/0 to 400kPa
AHNC-100P	Pressure Gauge, 0 to 100psi/0 to 700kPa
AHNC-160P	Pressure Gauge, 0 to 160psi/0 to 1100kPa
AHNC-200P	Pressure Gauge, 0 to 200psi/0 to 1400kPa
AHNC-300P	Pressure Gauge, 0 to 300psi/0 to 2100kPa
AHNC-400P	Pressure Gauge, 0 to 400psi/0 to 2800kPa
AHNC-600P	Pressure Gauge, 0 to 600psi/0 to 4200kPa
AHNC-1000P	Pressure Gauge, 0 to 1000psi/0 to 7000kPa
AHNC-1500P	Pressure Gauge, 0 to 1500psi/0 to 10500kPa
AHNC-2000P	Pressure Gauge, 0 to 2000psi/0 to 14000kPa
AHNC-3000P	Pressure Gauge, 0 to 3000psi/0 to 21000kPa
AHNC-5000P	Pressure Gauge, 0 to 5000psi/0 to 35000kPa
AHNC-6000P	Pressure Gauge, 0 to 6000psi/0 to 42000kPa