

## PRESSURE GAUGE

## PRODUCT DATASHEET

### FEATURES

- Stamped aluminum 2.5" diameter dial
- Dual English/metric scales (psi/kPa)
- $\pm 1.6\%$  accuracy
- Polished stainless steel case
- Glass lens, pressed bezel
- Bronze tube and brass socket with brass movement
- 1/4" male NPT connection, bottom (**AVNC**) or back (**AHNC**)
- Glycerine fill provides a dampening effect which minimizes pulsations; continuously lubricates gauge movement; and makes this gauge ideally suited for adverse environments



### ORDERING INFORMATION

AVNC-30HG	.....	Pressure Gauge, 30"Hg-0" Vac.
AVNC-30	.....	Pressure Gauge, 30"Hg-0-30 psi
AVNC-15P	.....	Pressure Gauge, 0-15 psi/0-100 kPa
AVNC-30P	.....	Pressure Gauge, 0-30 psi/0-200 kPa
AVNC-60P	.....	Pressure Gauge, 0-60 psi/0-400 kPa
AVNC-100P	.....	Pressure Gauge, 0-100 psi/0-700 kPa
AVNC-160P	.....	Pressure Gauge, 0-160 psi/0-1100 kPa
AVNC-200P	.....	Pressure Gauge, 0-200 psi/0-1400 kPa
AVNC-300P	.....	Pressure Gauge, 0-300 psi/0-2100 kPa
AVNC-400P	.....	Pressure Gauge, 0-400 psi/0-2800 kPa
AVNC-600P	.....	Pressure Gauge, 0-600 psi/0-4200 kPa
AVNC-1000P	.....	Pressure Gauge, 0-1000 psi/0-7000 kPa
AVNC-1500P	.....	Pressure Gauge, 0-1500 psi/0-10,500 kPa
AVNC-2000P	.....	Pressure Gauge, 0-2000 psi/0-14,000 kPa
AVNC-3000P	.....	Pressure Gauge, 0-3000 psi/0-21,000 kPa
AVNC-5000P	.....	Pressure Gauge, 0-5000 psi/0-35,000 kPa
AVNC-6000P	.....	Pressure Gauge, 0-6000 psi/0-42,000 kPa

### ORDERING INFORMATION

AHNC-30HG	.....	Pressure Gauge, 30"Hg-0" Vac.
AHNC-30	.....	Pressure Gauge, 30"Hg-0-30 psi
AHNC-15P	.....	Pressure Gauge, 0-15 psi/0-100 kPa
AHNC-30P	.....	Pressure Gauge, 0-30 psi/0-200 kPa
AHNC-60P	.....	Pressure Gauge, 0-60 psi/0-400 kPa
AHNC-100P	.....	Pressure Gauge, 0-100 psi/0-700 kPa
AHNC-160P	.....	Pressure Gauge, 0-160 psi/0-1100 kPa
AHNC-200P	.....	Pressure Gauge, 0-200 psi/0-1400 kPa
AHNC-300P	.....	Pressure Gauge, 0-300 psi/0-2100 kPa
AHNC-400P	.....	Pressure Gauge, 0-400 psi/0-2800 kPa
AHNC-600P	.....	Pressure Gauge, 0-600 psi/0-4200 kPa
AHNC-1000P	.....	Pressure Gauge, 0-1000 psi/0-7000 kPa
AHNC-1500P	.....	Pressure Gauge, 0-1500 psi/0-10,500 kPa
AHNC-2000P	.....	Pressure Gauge, 0-2000 psi/0-14,000 kPa
AHNC-3000P	.....	Pressure Gauge, 0-3000 psi/0-21,000 kPa
AHNC-5000P	.....	Pressure Gauge, 0-5000 psi/0-35,000 kPa
AHNC-6000P	.....	Pressure Gauge, 0-6000 psi/0-42,000 kPa

Contact us at 1-800-561-8187

[info@reedinstruments.com](mailto:info@reedinstruments.com)

[www.reedinstruments.com](http://www.reedinstruments.com)



### FEATURES

- 2.5" diameter dial
- Dual English/metric scales
- ASME Grade B accuracy:  $\pm 3\%$  first 3rd of scale,  $\pm 2\%$  middle 3rd of scale, and  $\pm 3\%$  last 3rd of scale
- Rated for -20 to 60°C and pressure steady at 75% f.s.
- Corrosion resistant stainless steel case and ring, acrylic lens
- Brass internal materials
- 1/4" NPT bottom connection only

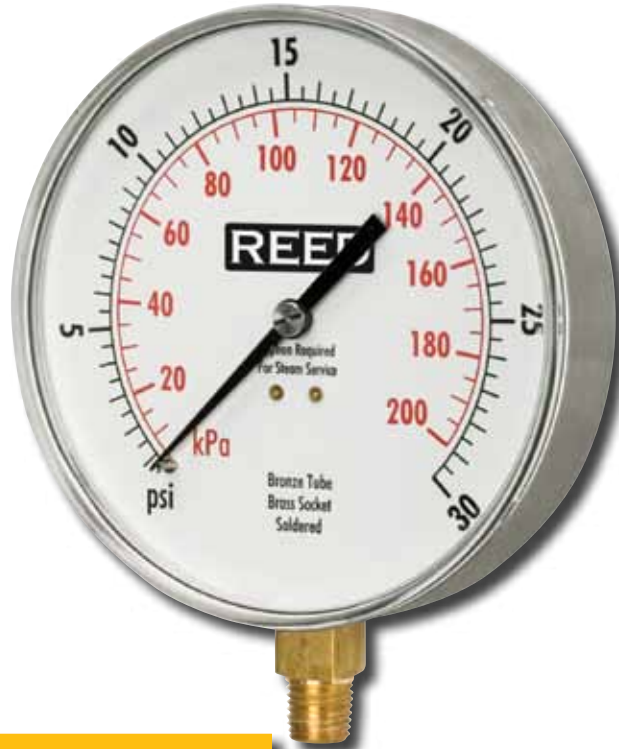
### ORDERING INFORMATION

LVBNA-30HG	.....	Pressure Gauge, 30"Hg-0" Vac.
LVBNA-30	.....	Pressure Gauge, 30"Hg-0-30 psi
LVBNA-15P	.....	Pressure Gauge, 0-15 psi/0-100 kPa
LVBNA-30P	.....	Pressure Gauge, 0-30 psi/0-200 kPa
LVBNA-60P	.....	Pressure Gauge, 0-60 psi/0-400 kPa
LVBNA-100P	.....	Pressure Gauge, 0-100 psi/0-700 kPa
LVBNA-160P	.....	Pressure Gauge, 0-160 psi/0-1100 kPa
LVBNA-200P	.....	Pressure Gauge, 0-200 psi/0-1400 kPa
LVBNA-300P	.....	Pressure Gauge, 0-300 psi/0-2100 kPa
LVBNA-400P	.....	Pressure Gauge, 0-400 psi/0-2800 kPa
LVBNA-600P	.....	Pressure Gauge, 0-600 psi/0-4200 kPa
LVBNA-1000P	.....	Pressure Gauge, 0-1000 psi/0-7000 kPa

Contact us at 1-800-561-8187

[info@reedinstruments.com](mailto:info@reedinstruments.com)

[www.reedinstruments.com](http://www.reedinstruments.com)



### FEATURES

- 4.5" diameter dial
- Dual English/metric scales (psi/kPa)
- $\pm 1\%$  accuracy
- Corrosion resistant stainless steel case and ring, plastic lens
- Soft soldered phosphor bronze tube with brass socket
- Phosphor bronze movement is recommended for general use
- White background with bold black and red numerals and graduations, 270° arc and balanced adjustable black pointer
- Suitable for steam, water, air, oil, gas or any medium not corrosive to copper alloys
- 1/4" NPT bottom connection only

### ORDERING INFORMATION

421AVND-30VAC .....	Pressure Gauge, ..... 30"Hg-0" Vac.
421AVND-30 .....	Pressure Gauge, ..... 0-30 psi/0-200 kPa
421AVND-60 .....	Pressure Gauge, ..... 0-60 psi/0-400 kPa
421AVND-100 .....	Pressure Gauge, ..... 0-100 psi/0-700 kPa
421AVND-160 .....	Pressure Gauge, ..... 0-160 psi/0-1100 kPa
421AVND-200 .....	Pressure Gauge, ..... 0-200 psi/0-1400 kPa
421AVND-300 .....	Pressure Gauge, ..... 0-300 psi/0-2100 kPa
421AVND-500 .....	Pressure Gauge, ..... 0-500 psi/0-3500 kPa

Contact us at 1-800-561-8187

[info@reedinstruments.com](mailto:info@reedinstruments.com)

[www.reedinstruments.com](http://www.reedinstruments.com)

## PRESSURE GAUGE

## PRODUCT DATASHEET

### FEATURES

- Stamped aluminum 4-1/2" (115mm) diameter dial
- Black, impact resistant phenolic case
- 316 stainless steel bourdon tube and socket
- Shatterproof glass lens
- Micrometer adjustable pointer
- 1/2% of full scale accuracy
- Transient over-pressure limit: 30%
- Silicone fluid filled and rated for -50 to 170°F
- Integral back flange with safety blowout backplate
- 1/4" (-1/4) or 1/2" (-1/2) NPT male bottom connection



### ORDERING INFORMATION

LF45-15-1/4.....Pressure Gauge, 30"-0-15 psi  
 LF45-30-1/4.....Pressure Gauge, 30"-0-30 psi  
 LF45-60-1/4.....Pressure Gauge, 30"-0-60 psi  
 LF45-30HG-1/4 ..... Pressure Gauge, 30"-0 Hg Vac.  
 LF45-15P-1/4.....Pressure Gauge, 0-15 psi/0-100 kPa  
 LF45-30P-1/4.....Pressure Gauge, 0-30 psi/0-200 kPa  
 LF45-60P-1/4.....Pressure Gauge, 0-60 psi/0-400 kPa  
 LF45-100P-1/4.....Pressure Gauge, 0-100 psi/0-700 kPa  
 LF45-160P-1/4..... Pressure Gauge, 0-160 psi/0-1100 kPa  
 LF45-200P-1/4 ..... Pressure Gauge, 0-200 psi/0-1400 kPa  
 LF45-300P-1/4 .....Pressure Gauge, 0-300 psi/0-2100 kPa  
 LF45-400P-1/4 ..... Pressure Gauge, 0-400 psi/0-2800 kPa  
 LF45-600P-1/4 ..... Pressure Gauge, 0-600 psi/0-4200 kPa  
 LF45-1000P-1/4.... Pressure Gauge, 0-1000 psi/0-7,000 kPa  
 LF45-1500P-1/4... Pressure Gauge, 0-1500 psi/0-10,500 kPa  
 LF45-2000P-1/4...Pressure Gauge, 0-2000 psi/0-14,000 kPa  
 LF45-3000P-1/4...Pressure Gauge, 0-3000 psi/0-21,000 kPa  
 LF45-5000P-1/4...Pressure Gauge, 0-5000 psi/0-35,000 kPa  
 LF45-10000P-1/4 ... Pressure Gauge, 0-10,000 psi/0-70,000 kPa

### ORDERING INFORMATION

LF45-15-1/2.....Pressure Gauge, 30"-0-15 psi  
 LF45-30-1/2.....Pressure Gauge, 30"-0-30 psi  
 LF45-60-1/2.....Pressure Gauge, 30"-0-60 psi  
 LF45-30HG-1/2 ..... Pressure Gauge, 30"-0 Hg Vac.  
 LF45-15P-1/2.....Pressure Gauge, 0-15 psi/0-100 kPa  
 LF45-30P-1/2.....Pressure Gauge, 0-30 psi/0-200 kPa  
 LF45-60P-1/2.....Pressure Gauge, 0-60 psi/0-400 kPa  
 LF45-100P-1/2.....Pressure Gauge, 0-100 psi/0-700 kPa  
 LF45-160P-1/2..... Pressure Gauge, 0-160 psi/0-1100 kPa  
 LF45-200P-1/2 ..... Pressure Gauge, 0-200 psi/0-1400 kPa  
 LF45-300P-1/2 .....Pressure Gauge, 0-300 psi/0-2100 kPa  
 LF45-400P-1/2 ..... Pressure Gauge, 0-400 psi/0-2800 kPa  
 LF45-600P-1/2 ..... Pressure Gauge, 0-600 psi/0-4200 kPa  
 LF45-1000P-1/2.... Pressure Gauge, 0-1000 psi/0-7,000 kPa  
 LF45-1500P-1/2... Pressure Gauge, 0-1500 psi/0-10,500 kPa  
 LF45-2000P-1/2...Pressure Gauge, 0-2000 psi/0-14,000 kPa  
 LF45-3000P-1/2...Pressure Gauge, 0-3000 psi/0-21,000 kPa  
 LF45-5000P-1/2...Pressure Gauge, 0-5000 psi/0-35,000 kPa  
 LF45-10000P-1/2 ... Pressure Gauge, 0-10,000 psi/0-70,000 kPa

Contact us at 1-800-561-8187

[info@reedinstruments.com](mailto:info@reedinstruments.com)

[www.reedinstruments.com](http://www.reedinstruments.com)